

# **Plans and drawings relevant to reports submitted to Eastern Area Planning Committee**

**Wednesday 30<sup>th</sup> March 2022 at 6.30pm**

**At Council Chamber, Council Offices, Market Street,  
Newbury, RG14 5LD**

**And via Zoom**

**[to be read in conjunction with the main agenda]**

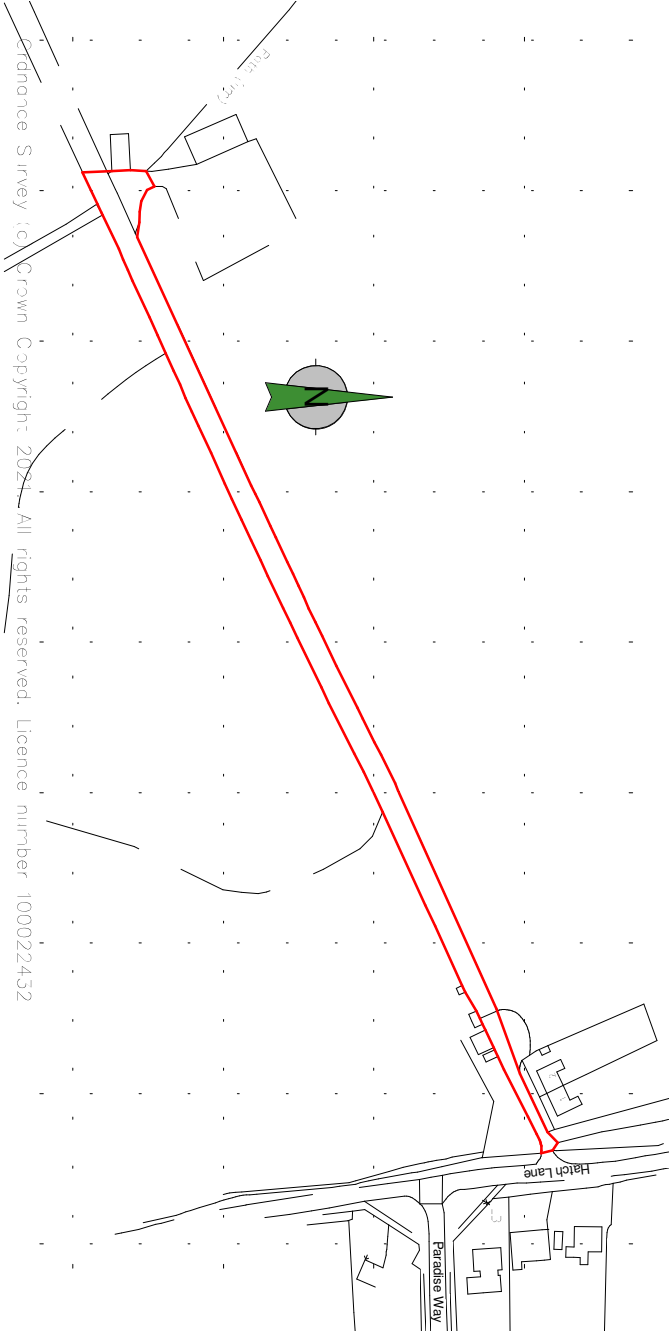
*Please note:*

- *All drawings are copied at A4 and consequently are not scalable*
- *Most relevant plans have been included – however, in some cases, it may be necessary for the case officer to make a selection*
- *All drawings are available to view at [www.westberks.gov.uk](http://www.westberks.gov.uk)*

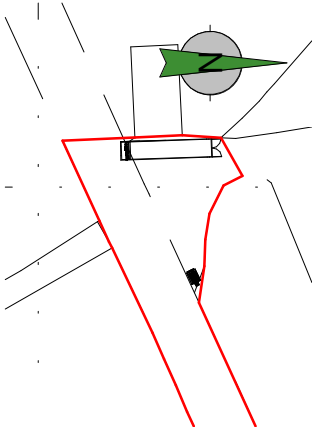


**WestBerkshire**  
C O U N C I L

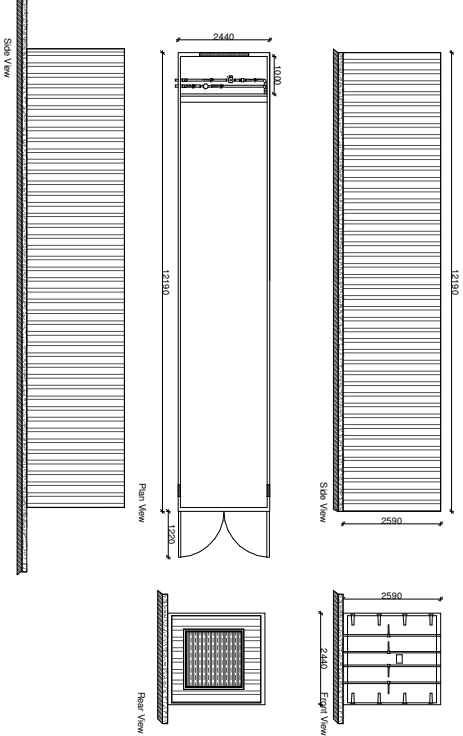
21/03222/FUL  
Middle Wood  
Hatch Lane  
Chapel Row  
RG7 6NY



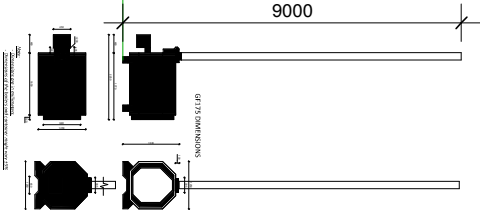
site location 1:1250



block plan 1:500



40ft log drying container 1:100



GF175 boiler 1:100

Client <b>Glenn Farrow Ltd</b>			
Project Title <b>Proposed Boiler PJ Forestry Reading</b>			
Drawing Title <b>Proposed Boiler</b>			
Scale Various	Drawn By SEPT 21	Sheet A2	Drawn By 21/114
Author LW	Checked By -	Drawn By -	Drawn By 01A
STAGE <b>PLANNING</b>			

19 Saxon Road  
Leeds LS10 1JW  
Tel: 01455 653 665  
Fax: 01455 618 971  
www.hayward-architects.co.uk

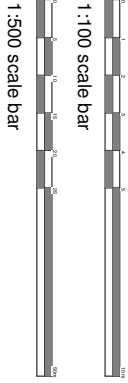
**hayward**  
ARCHITECTS LTD

19 Saxon Road  
Leeds LS10 1JW  
Tel: 01455 653 665  
Fax: 01455 618 971  
www.hayward-architects.co.uk

**hayward**  
ARCHITECTS LTD

19 Saxon Road  
Leeds LS10 1JW  
Tel: 01455 653 665  
Fax: 01455 618 971  
www.hayward-architects.co.uk

**hayward**  
ARCHITECTS LTD



1:1250 scale bar

1:500 scale bar

1:100 scale bar